

RIGHT PRICE

■ Pluggit!®

STAHLIN FIBERGLASS HOLE PLUG ASSEMBLY

The new, reliable, cost-effective option for maintaining enclosure integrity.

- Superior corrosion resistance compared to rust-prone carbon steel and other metallic alternatives helps ensure increased enclosure life expectancy.
- Up to 25% less than carbon steel hole seals, and as much as 200% less than stainless steel hole seals.
- Considerably better long-term resistance to UV degradation versus UV-susceptible soft rubber plugs that turn brittle from extreme temperature variations and repeated UV exposure.
- Will not create galvanic corrosion associated with dissimilar metals sometimes used in electrical enclosures.
- Maintains all chemical resistance features of current Stahlin products.
- Flame retardant material to UL 94V-0.
- A submersion/hosedown rated component for use in electrical enclosures UL recognized to type 4x and 6P.
- IP66 and IP68 rated.



The importance of Stahlin's Fiberglass Hole Plug

Electrical enclosures that have extra holes in them either from incorrect drilling or intentional drilling of extra holes for later use require recognized component hole plugs to maintain original enclosure integrity by sealing against entry of dust, water and other potentially destructive elements.

Stahlin's Fiberglass Hole Plug provides an ideal combination of high quality protection in corrosive and outdoor environments...cost effectiveness...and proven resistance to UV degradation.

This durable yet cost effective assembly is available in 9 basic kits to seal cutouts from 1/2" to 4-5/8" diameters and common electrical industry applications.



With Pluggit!, You can rely on Stahlin's 50 plus years of composite manufacturing and innovation!

As pioneers of the fiberglass electrical enclosure, it's no surprise that Stahlin is the pioneer of the fiberglass hole plug!

**RIGHT PRODUCT
RIGHT PRICE
RIGHT NOW**



EncloseYours



STAHLIN
Non-Metallic
Enclosures

500 Maple Street
Belding, Michigan 48809

Ph. (616) 794-0700
FAX. (616) 794-3378
Web: www.stahl.in.com



RIGHT PRODUCT
RIGHT PRICE
RIGHT NOW



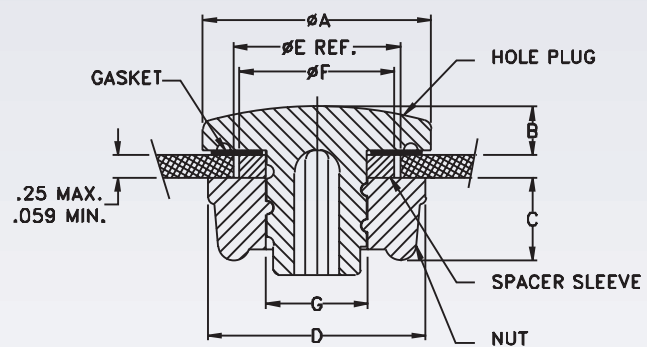
Pluggit!®

Pluggit! Industry Standards

- UL/CUL50: E64358 Type 1, 3R, 4, 4X, 6, 6P, 12
- CSA 22.2: LR69014 TYPE 1, 3R, 4, 4X, 6, 6P, 12
- IEC60529: IP66, IP67, IP68
- NEMA 250: Type 1, 3R, 4, 4X, 6, 6P, 12
- Temp. Range: -40°F to +250°F
- Flammability: UL94 V-O
- FRP Toxicity: Non halogenated
- Chem. Resistance: see master catalog

Where to use

- General Enclosure Use
- All Non-Metallic and Metallic Enclosure Materials
- High UV Exposure
- Chemically Corrosive Environments
- Wet and Humid Environments
- Wash down Areas
- Submersion Applications



Kit Number	Config.	ØA	B	C	D Across Flat	ØE Ref. = nom. Hole Dia Range	ØF	ØG	Common Industry Applications
HP Series 1	HP1					0.50"-0.56" (12.70-14.20)	N/A		1/2" Dia. Hole
	HP2	1.00" (25.40)	.22" (5.59)	.35" (8.89)	.88" (22.35)	0.63"-0.69" (19.05-20.64)	0.56" (14.22)	0.44" (11.18)	5/8" Dia. Hole
	HP3					0.75"-0.81" (19.05-20.64)	0.68" (17.27)		3/4" Dia. Hole
HP Series 1.5	HP3.5	1.20" (30.28)	.22" (5.59)	.33" (8.38)	1.04" (26.39)	.88" (22.35)	N/A	0.81" (20.57)	1/2" Conduit
HP Series 2	HP4					0.88"-1.00" (22.35-25.4)	N/A		1/2" Conduit, 22mm PB
	HP5	1.50" (38.10)	.22" (5.59)	.38" (9.63)	1.38" (35.05)	1.06"-1.12" (26.92-28.45)	1.03" (26.16)	0.85" (21.59)	3/4" Conduit
	HP6					1.22"-1.28" (30.73-32.51)	1.19" (30.22)		30mm PB
HP Series 3	HP7					1.38"-1.50" (35.05-38.10)	N/A		1" Conduit
	HP8	2.00" (50.80)	.22" (5.59)	.38" (9.63)	1.88" (47.75)	1.69"-1.75" (42.67-44.45)	1.65" (41.91)	1.35" (34.29)	1-1/4" Conduit
HP Series 4	HP9					2.00"-2.12" (50.80-53.85)	N/A		1-1/2" Conduit
	HP10	2.75" (69.85)	0.22" (5.59)	0.41" (10.41)	2.63" (66.67)	2.50"-2.56" (63.50-65.09)	2.44" (61.89)	1.97" (50.04)	2" Conduit
HP Series 5	HP11	3.38" (85.85)	0.22" (5.59)	0.34" (8.63)	3.38" (85.85)	3.00" (76.20)	N/A	2.97" (75.44)	2-1/2" Conduit
HP Series 6	HP12	4.00" (101.60)	0.22" (5.59)	0.34" (8.63)	4.00" (101.60)	3.62" (91.95)	N/A	3.59" (91.10)	3" Conduit
HP Series 7	HP13	4.50" (114.30)	0.22" (5.59)	0.38" (9.63)	4.50" (114.30)	4.12" (104.65)	N/A	4.09" (103.88)	3-1/2" Conduit
HP Series 8	HP14	5.00" (127.00)	0.22" (5.59)	0.41" (10.41)	5.00" (127.00)	4.62" (117.35)	N/A	4.59" (116.58)	4" Conduit

EncloseYours



**Non-Metallic
Enclosures**

500 Maple Street
Belding, Michigan 48809

Ph. (616) 794-0700
FAX. (616) 794-3378
Web: www.stahlin.com

